

# K 63 BASE\*

## BESCHREIBUNG

» Profil für Stapelreifeneinsatz

## FEATURES

» Tread for fork lift application

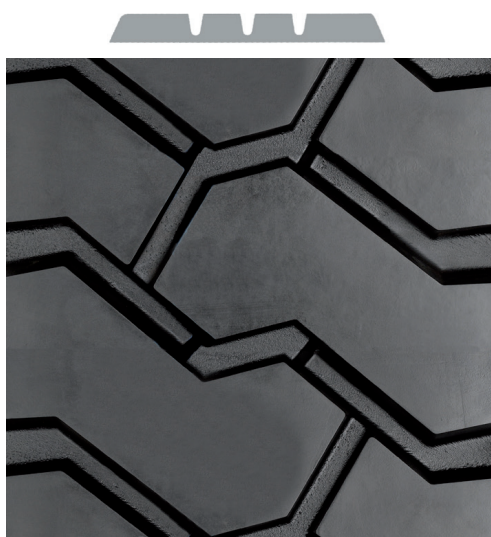







Die Metergewichte und Profiltiefen können produktionsbedingt um +/- 2 % variieren.

\*\* Standardlänge aller Streifen ~ 10 m ausgenommen K 19 (390 mm), K 63, K 64, K 66, K 68, K 69, K 71, K 75, KZU+ (250 mm), K 77 (107 mm)

Weight per meter and profile depth may vary by +/- 2 % according to production batch.

\*\* Standardlength of all treads ~ 10 m excluded K 19 (390 mm), K 63, K 64, K 66, K 68, K 69, K 71, K 75, KZU+ (250 mm), K 77 (107 mm)



 mm	 mm	 mm	 kg/m	 m
270		26,0	8,67	3,30
280		26,0	9,02	3,30

\* nur in kurz verfügbar | only available cut to length

